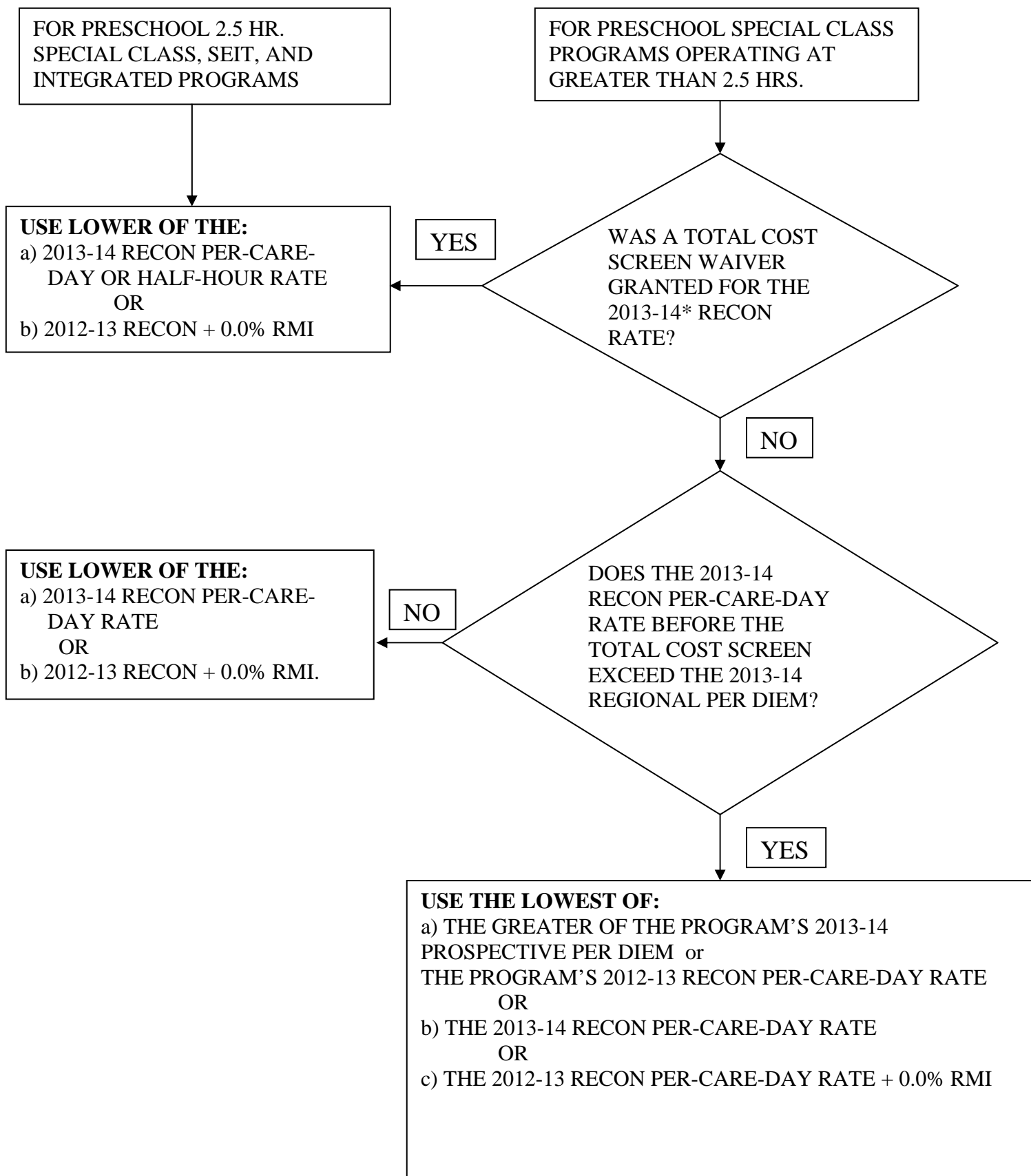


ATTACHMENT I - 2013-14 RECONCILIATION PROCESS-PRESCHOOL



*-REFER TO SECTION E. 2013-14 RECONCILIATION PROCESS IN SECTION I OF THE MEMO

ATTACHMENT I – 2013-14 RECONCILIATION PROCESS- SCHOOL AGE

FOR SCHOOL AGE PROGRAMS



USE THE SUM OF:

THE LOWER OF THE 2013-14 RECON NON-DIRECT CARE (NDC) PER CARE DAY RATE OR 2012-13 RECON NDC PER CARE DAY RATE + 0.0% RMI

PLUS

THE LOWER OF THE 2013-14 RECON DIRECT CARE (DC) PER CARE DAY RATE OR 2012-13 RECON DC PER CARE DAY RATE + 3.0% RMI.